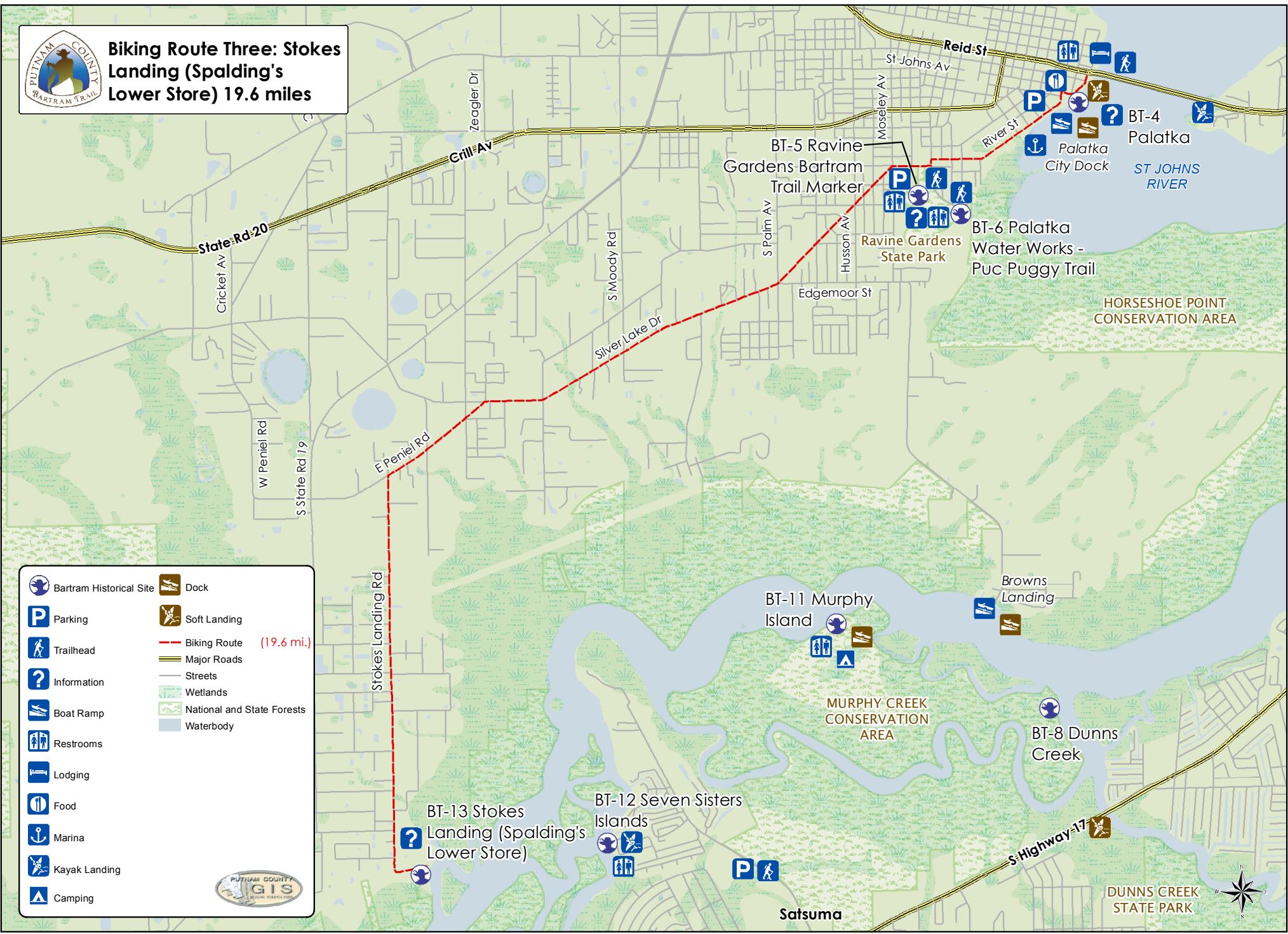




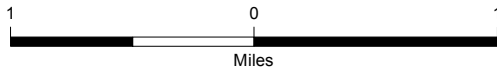
# Biking Route Three: Stokes Landing (Spalding's Lower Store) 19.6 miles



	Bartram Historical Site		Dock
	Parking		Soft Landing
	Trailhead		Biking Route (19.6 mi.)
	Information		Major Roads
	Boat Ramp		Streets
	Restrooms		Wetlands
	Lodging		National and State Forests
	Food		Waterbody
	Marina		
	Kayak Landing		
	Camping		



Project No:	316m23	Created by:	BOCC
Date:	7/7/2015	Date:	7/7/2015
File: N:\Projects\BartramMXD\IndividualBikingRoutes\Route 3\BikingRoute3_Slksk.ndg.mxd			
Source: Putnam County GIS Office, Putnam County Bartram Trail Committee			
Version:			



Disclaimer: "This map is for reference only. Data provided are derived from multiple sources with varying levels of accuracy. Putnam County and its employees disclaim all responsibility for the accuracy or completeness of the data shown hereon. To promote safe sharing of the roads, bicyclists should always know and follow Florida bicycle laws, located in chapter 316 Florida Statutes."